

# Theatr Clwyd

## Recruitment Pack



© Milky Peaks (2022)



Home, I'm Darling (2019)



**Liam Evans-Ford**  
Executive Director

**Kate Wasserberg**  
Artistic Director

Theatr Clwyd is currently operating in the most exciting, and critical, period in its history.

In 2021, the theatre became an independent charitable trust and trading group, having been run by Flintshire County Council since opening in 1976.

In addition to the new governance model Theatr Clwyd is in the construction phase of a major capital redevelopment of the main facility in Flintshire, a £45m project supported by Welsh Government, Flintshire County Council and Arts Council of Wales. The project will reimagine what a theatre and arts centre can be, how it can be a home, a place of wellbeing, a place of learning, laughter, delight, and a place of equality and support for all the communities we are here to serve.

We are also now responsible for the running of William Aston Hall in Wrexham, a 1000 capacity concert venue owned by Wrexham University, and we also have the responsibility of running the music service in Flintshire via our partner charity – Theatr Clwyd Music Trust.

Theatr Clwyd is here for future generations, and its vital that we strive towards our mission in all that we do ‘To make the world a happier place, one moment at a time’

We hope you are excited to find out more about this vacancy and can't wait to meet you.



Junkyard (2017)

# Theatre Making

Theatr Clwyd has been making world-class theatre in the hills of North Wales since 1976.

We are one of few theatres in the UK to still have scenic construction, costume making, props, and scenic art teams all in-house alongside the lighting, sound, and stage teams. We always aim to offer the warmest environment for creative teams to produce their best work.



To Dream Again (2016)

We have two permanent theatre spaces – a 550 seat proscenium arch theatre and a fully flexible 179 seat studio theatre.

Before the start of the redevelopment, we produced between 12-14 shows per year, made up of a combination of world premieres and re-imaginings of contemporary classics with a focus on artists born, raised or living in Wales. We make work on our stages, online and in our communities, and have delivered with major co-producing partners.

We have a flexible approach to theatre programming, with no set seasons of work, with the only fixed element being our Rock ‘n’ Roll Pantomime that attracts around 30,000 audience members annually.



Productions over recent years include *Home, I'm Darling* (a co-production with The National Theatre); *The Assassination of Katie Hopkins*; the immersive *Great Gatsby*; *Isla* (a co-production with the Royal Court, and then re-commissioned for BBC TV); and the digitally delivered *The Picture of Dorian Gray*.

The development of theatre-makers is a core part of our approach, and we are always striving to go further. We work with all disciplines to support and nurture the next generation of theatre-makers in our communities, in Wales, and beyond, and have significant partnerships in place with organisations such as Royal Welsh College of Music and Drama.

We regularly employ 400 freelancers each year across theatrical and artistic disciplines.

We love making theatre of all scales, and in addition to core team members with dedicated theatre-making disciplines we spend between £1.2m-£2m each year directly on theatre production.

We are committed to the Theatre Greenbook programme as we work to ensure our operations are environmentally sustainable. We are also in the early stage of a partnership called Craidd, which aims to make the theatre sector in Wales the most open and accessible theatre sector in the world.



In recent years, Theatr Clwyd has won an array of prestigious awards including Best New Musical (UK Theatre Awards), Digital Delivery (WhatsOnStage), Regional Theatre of the Year (The Stage) and an Olivier award for Best New Comedy for *Home, I'm Darling*.



Theatr Clwyd from above (2021)

# Our Building

The Theatr Clwyd building in Flintshire was opened in 1976, and is astonishing in its ambition, scale, and quality of provision. Its Grade II listing in 2018 noted it as *‘an important example of a post war civic arts and theatre complex, the key example of this building type in Wales and one of the leading examples in the UK.’*

Pre and post capital the building hosts two main auditoria, a cinema, gallery spaces, and events spaces.

The £45m investment will offer high-quality rehearsal rooms, revitalised theatres, and fit for purpose theatre-making spaces for all of our in-house teams.

There will be dedicated space for training in theatre-making, our work with young people, our referral partnerships for health and wellbeing, and events and catering spaces to help increase revenue generation.



Main House (2019)

Our front of house areas are re-imagined to be open and welcoming, make the most of our stunning location, and allow us to become an all-day destination that can welcome young families for creative play, as well as those who want to enjoy food and drink with friends and family. Both front and back of house areas will have the highest of accessibility standards delivered for company members and visitors alike.

The new building will be gas free, will harvest rainwater and solar energy, and will be able to operate at carbon neutral, on a good day at carbon positive.

The scheme has been developed with Haworth Tompkins whose previous theatre buildings include London’s Royal Court, The Young Vic, Liverpool Everyman, Bristol Old Vic, and The National Theatre.

[Click here](https://shorturl.at/86j2t) for more information. (<https://shorturl.at/86j2t>) for more information.



Redeveloped Building Images | By Howarth Tompkins





The Assassination Of Katie Hopkins (2018)

## Our Business

Theatr Clwyd Trust and trading group, and Theatr Clwyd Music Trust which delivers all music education in the county, have an annual turnover of around £7m which is made up of core public funding and earned income.

We are the third biggest client of the Arts Council of Wales, currently receiving £1.8m per year and generate around £1.8-£2m per year via our box office.

In July 2022 Theatr Clwyd took on the running of William Aston Hall, a 1000 seat concert hall in Wrexham University. The site, located in the largest city in North Wales and only 20 minutes from our base in Flintshire, allows for different elements of programming including high profile standup comedy and current and popular music. The wider partnership with the university towards training and development is enhanced by our management of this venue.

Pre-pandemic we attracted 200,000 visitors to live events at our site in Flintshire, and a further 100,000 attendees to Creative Engagement and Music activities. Between 2018-2020 we had over 500,000 people see a Theatr Clwyd production elsewhere in the UK.

Post-pandemic we are in a strong position, with audience numbers at a recognisable pre-pandemic level, and positively benchmarked compared to other similar venues in the UK. We have sensible levels of reserves in place, and long standing funding relationships with both Arts Council of Wales and Flintshire County Council.



# Our Community

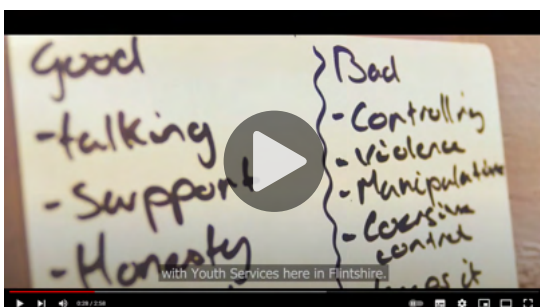
Our work with our communities is at the heart of what we do and has equal status with the work we produce and present on our stages. We have one of the largest Creative Engagement teams in the UK and the whole company are involved in community activities.

Working in partnership is one of the key ways we deliver support and social care within the community. Social Services have been a long-lasting partner, and this was strengthened during the pandemic where we co-created programmes with some of the most vulnerable young people in our community.

We also have a long-standing partnership with our NHS Board, Betsi Cadwaladr, working with local hospitals and care homes creating intergenerational projects and award-winning work supporting those with memory loss. For the last 5 years we have streamed our major Christmas production into every hospital in North Wales, and to over 60 care homes in the region, for free.

We have weekly workshops for all ages (our youngest member is 4 years old and our oldest 78 years old) and we strive to create socially engaged projects and a high standard of productions with and for these groups.

We work closely with schools all over North Wales, taking civic responsibility projects into schools based on identified need, and each week we deliver over 1000 music lessons via our in-house team of musicians.



We keep a promise to all our participants.  
*We will always listen so that we never stop learning.*  
*We will always care so that you can achieve your dreams.*  
*We will create together.*  
*We will always be your home.*

More information on our work for communities can be found [here](https://www.theatrclwyd.com/take-part) (https://www.theatrclwyd.com/take-part)





Lord Of The Flies (2018)

# Our Company

Our company is made up of our 140 direct core company members, 100 relief and seasonal company members, over 400 freelance artists and practitioners each year, and 150 volunteers who work with us on a regular basis as ushers and across other disciplines.

The main Theatr Clwyd Trust Board is made up of a dedicated and skilled set of trustees.

More information on the board can be found [here](https://www.theatrclwyd.com/our-trustees) (https://www.theatrclwyd.com/our-trustees)



# Theatr Clwyd Music

Theatr Clwyd Music Trust provides opportunities for children, young people and adults to take part in musical activities and supports accessible progression pathways through lessons, groups and ensembles, performances, workshops and events. We have a talented team of Music Associates with a range of musical specialisms who work with schools and communities in Flintshire and across the region. We work closely with colleagues within the Theatr Clwyd families, especially the Creative Engagement Team, and we also develop strategic partnerships with regional and national organisations.

We currently work with over 3000 children, young people and adults each week, including, 1900 year 3 pupils with our First Experiences whole class teaching programme. Alongside teaching in all of Flintshire's schools, we also offer lessons out of school through our Music Pathways programme and run 9 ensembles including choirs, wind bands and a pop and rock group. We also work in partnership across the region and more widely, with our Tri County Ensembles courses engaging over 120 young instrumentalists and singers from across North East Wales.



# William Aston Hall

William Aston Hall is Wrexham's largest theatre and concert venue seating up to 880 (1200 standing).

Located on the outskirts of Wrexham town centre on the campus of Wrexham University it has hosted some of the biggest names in comedy (including Sarah Millican, Chris McCausland & Katherine Ryan), music (including The Royston Club & Sweet) as well as ballet, dance, talks and shows. We are also home to the acclaimed Wrexham Symphony Orchestra.

The hall is named after legendary Wrexham resident William Aston CBE (1869-1962), a renowned businessman and local politician who played a key role in the development of Wrexham as a town and as a centre of learning.

In 2022 Theatr Clwyd and Wrexham University came together in a new partnership to save the the future of William Aston Hall. Together we will protect this vital arts venue as a community asset, ensuring that the people of Wrexham and North Wales have access to the best in Welsh, UK and international entertainment.

This partnership offers a fresh start - bringing the theatrical expertise of Wales' biggest producing theatre together with the innovation of Wrexham University, to ensure that the venue thrives into the future. Theatr Clwyd now runs the venue - from bars and ticket sales, to programming and hiring.

We're building for the long-term, to ensure our programme grows in harmony with the town and region we serve. We will be taking things slowly - step-by-step working to rebuild trust - we'll be talking to our communities and making sure we're a collaborative force for good that brings people together.

We are a cultural sanctuary, a hall to forge communities, bringing together people to laugh, cry, dance and sing.