

We are looking for a trainee set and costume designer



About this document



This is an easy read version of "Craidd & Theatr Clwyd - Under Milk Wood trainee Set and Costume Designer information pack".



Words in **bold blue writing** may be hard to understand. Hard words are explained in a box.



Where the document says we, this means Theatr Clwyd. For more information contact:

Website: www.theatrclwyd.com

E-mail: stiwdio@theatrclwyd.com



[Easy Read Wales](#) made this document into Easy Read using Photosymbols. [To tell us what you think about this easy read version, click here.](#)

[Photosymbols Licence number 403527247](#)

About Craidd



Craidd is the name given to 5 organisations working together. They are:

- Theatr Clwyd
- Sherman Theatre
- Pontio Arts
- Torch Theatre and
- Royal Welsh College of Music and Drama.



Our goal is to make sure more groups of people can be involved with theatre.



We are working together to make theatre inclusive for all.



Our aim is to make sure Deaf, Disabled and **neurodivergent** people are:

- included
- and seen more in theatre.



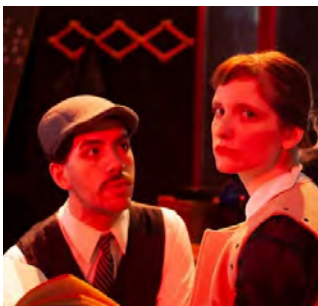
Neurodivergent people are people whose minds work in different ways to many other people.



Sara Beer is the Director of Craidd. There are 5 other people employed on this project. They are called Agents for Change.



Each organisation that is part of Craidd will make a touring production with Deaf, disabled and **neurodivergent** people.



In 2026 we are putting on a show called Under Milk Wood.



This is our first Craidd show. It will be toured in Sherman Theatre, Pontio Arts, and the Torch Theatre.

About the trainee set and costume designer role



The trainee role is for people who are:

- Deaf
- Disabled
- or [Neurodivergent](#)



Many Deaf, Disabled, and [Neurodivergent](#) people face barriers working in theatre.



The trainee role will give you:

- The chance to work and learn new skills.
- Experience working in theatre.
- A chance to explore your ideas.
- A safe and supportive place to grow your skills.
- A chance to meet people who could help with your future career.



You will learn from award winning designer Hayley Grindle.



The trainee role will be from 26 January 2026 to 20 March 2026.



You will also be asked to come to the final design meeting. This will be held during the week starting 24 November 2025.



Usual hours: 10am to 6pm



You will need to be at the theatre full time. You may be able to do some work from home.



We can talk about this in your interview and during your work.



We may need you for some evening and weekend work.

Who can apply

You can apply if:



- You identify as Deaf, disabled or [neurodivergent](#).



- You were born in, grew up in, or live in Wales.



- You are 18 or over.



- You have experience in theatre design and want to learn more.



- You have worked in design before and want to return to design after a break.

We want someone who:



- Loves theatre and design.
- Is interested in large theatre shows.
- Is organised, calm and kind.
- Cares about making theatre inclusive for everyone.
- Has some experience in theatre design.
- Is not in school, college, or university.
- Works well as part of a team.
- Enjoys working with different communities.

You must have some experience or know about:



- Safe working and PPE - Personal Protective Equipment.



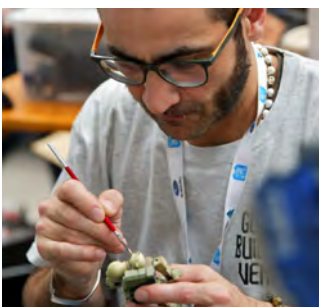
- Working safely at heights or with unsafe materials.



- Scenery and painting techniques.



- Looking after tools and using things like spray guns.



- Drawing, colour mixing, and texture work.
- Sculpture and model making.

It would be good if:



- You have a full, clean driving licence.



- You can speak Welsh.



- You have worked on community projects before.

What you will do

You will:



- Go to design meetings.



- Go to meetings with the whole cast and crew.



- Chat face to face with designers.



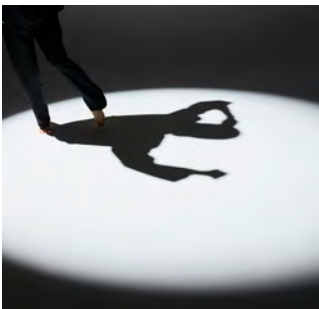
- Spend 2 to 3 weeks with different teams at Theatr Clwyd:
 - Wardrobe team, to see how costumes are made.
 - Scenic Construction team, to see how the set is built.
 - Scenic Art team to see how the set is painted and decorated.



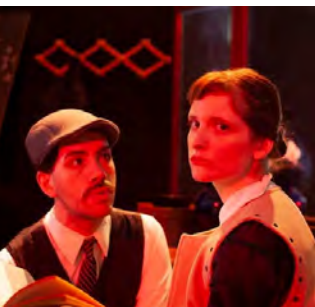
- Watch costume fittings when you can.



- Watch rehearsals, especially when the design team is there.



- Be there during set building and technical rehearsals.



- Go to preview shows and help make changes before opening night.



You will meet other teams like:

- Producers
- Production Managers
- Lighting and Sound teams.

You will also:



- Talk with the other trainees about your ideas and learning.



- Visit different areas of the theatre to learn more.



- Get help from the Craidd Agent for Change to support you.



- Get help from the Director of Stiwdio Clwyd to look at what you have learned. And plan your next steps.



This is a pilot project, it means we are trying out this project. So, we will ask you to give feedback at the end.

How we will support you



We want to make the application and interview fair. We want to offer people the support they need.

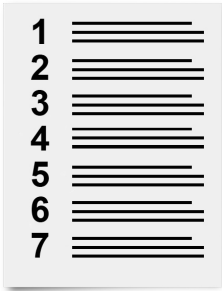


Please tell us if you need any support for the interview.



This won't affect your chance of being chosen for the interview.

If you are chosen for an interview, we will send you:



- Interview questions before the interview.



- Clear written information about what to expect on the day.

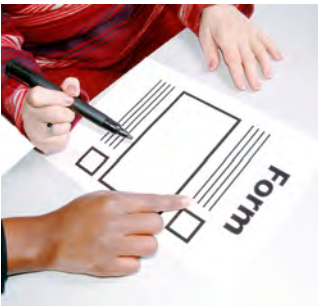


- We can provide the information in other formats if you ask.

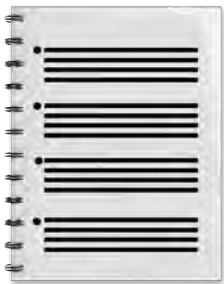
If we choose you for the trainee role:



- We will work with you to meet your needs.



- We will ask you to fill in a Work with Me form.



- You can also send an Access Rider if you have one – This is a document about your needs.



- If you get help from Access to Work, you should keep using that during your time as a trainee.



- If the trainee budget does not cover your needs, we can help you apply for more support.

Important dates



Monday, 18 August 2025

Application deadline.



Wednesday, 27 August 2025

We will contact 4 people and invite them to an interview.



Week starting 15 September 2025

Interviews will take place. This will involve:

- Watching a design meeting.
- Having an interview with:
 - Set and Costume Designer, Hayley Grindle
 - Director, Kate Wasserberg
 - a member of the Theatr Clwyd Making Team
 - a member of the Craidd team



Friday, 19 September 2025

We will tell you if you are chosen for the trainee role.



Week starting 24 November 2025

You will be invited to come to the final design meeting at Theatr Clwyd.



Week starting 2 February 2026

Rehearsals start for Under Milk Wood. This week will be your Induction Week at Theatr Clwyd.

You will work with:

- Wardrobe Team
- Scenic Construction Team
- Scenic Art Team



Weeks starting 9 and 16 February 2026

You will go to rehearsals. Dates will be agreed with the designer to suit your learning.



Week starting 23 February 2026

More time with the creative making teams.



2 to 7 March 2026

Fit-Up and Tech Week.

You will be at Theatr Clwyd full time. This is when the stage is built and technical work begins.



9 to 14 March 2026

Tech Week and Previews

You will continue full time at the theatre, helping with planning and set up.



Week starting 16 March 2026

Preview shows and guest night.

You will:

- Finish any changes before the show opens.
- Have a final meeting with the designer.
- Help with final set up work.
- Be at the theatre full time.



Thursday, 19 March 2026

Attend guest night for Under Milk Wood.



Friday, 20 March 2026

Your final day:

- Have a final meeting with the designer. The date may change.
- Complete your feedback form.
- Have a final meeting with the Craidd and Stiwdio Clwyd teams.

Money



We will give £5,300 for your time as a trainee. This money is called a bursary.



We will also give up to £2,970 to help with travel and accomodation costs.



You must keep receipts to get this money back. We will pay you back for what you spend.



The £5,300 bursary will be paid in 4 parts.



You will need to pay your own tax and National Insurance. If you are not self-employed, we can help you set this up.

How to Apply

Please send us:



- Your CV. It should be no more than 1 side of A4 page.



- A link to your website or portfolio.



Tell us in 300 words, or send a 3 minute video about:

- Why this trainee role is important for you right now.
- How it will help you grow as a set and costume designer?
- What you want to learn.



Write up to 200 words, or send a 2 minute video about:

- What set and costume design or designer has inspired you and why?



Tell us if you need any support for the interview.



Please include 2 references. These are people who know your work:

- 1 should be a creative collaborator. Creative collaborator means someone who works together with others to make something creative. Like film or artwork.
- 1 should be a designer, director, or producer.



We will only contact them with your permission at a later date.



If you need help to apply, we can provide support. More details on how to apply will be included in the application pack.

How to send us your application



You can send your answers as written text or as a video.



You can send it to us in Welsh or British Sign Language (BSL) if you want to.



Please email your application to:
stiwldio@theatrclwyd.com



You must send us your application by 6pm on 18 August 2025.